

Cold Storage Doors

SWING DOOR

THERMACLEAN® I-SERIES

Key Features

- Hygienic and Acid-Resistant Steel Panel
- Double Perimeter Sealing
- Durable Full Rubber Gasket
- Acid-Proof Steel Hinges
- Latch Lock or Bolt Lock Closures

Major Benefits

- **Reliable Performance:**
Stainless or coated steel door leaf and combined fittings safely ensure freezer requirements ranging from 23°F to -49°F.
- **Thermal Efficiency:**
Tight-fitting perimeter sealing and gasket eliminates thermal leakage while preventing door leaf from freezing.
- **Custom Functionality:**
Custom opening and locking configurations and diverse panel options deliver proven security and style.

THERMACLEAN® I-SERIES

I General Specifications

Standard Size	11' W x 14' H
Temperature Range	23F to -49F
Insulation / Structure	Polyurethane foam and equipped with stainless steel reinforcements, ensuring the durability and rigidity of the construction. Standard equipped thermostat protects heaters from damage while freezer door is not operating.
Metal Cladding	Stainless steel equipped with CH-type angled door frames. Doors made of coated steel are equipped with more economical overlay door frames.
Sealing	Two-component, durable rubber seal in a special profile around door perimeter. Soft upper part adjoins door frame, ensuring proper tightness and door functionality.

I Door Frames and Thresholds



Heated freezer door frames are integrated with steel thresholds and filled with concrete.

Angle frame is installed on sandwich panel with an optional panel cover.

I Block Frame

I Optional Equipment



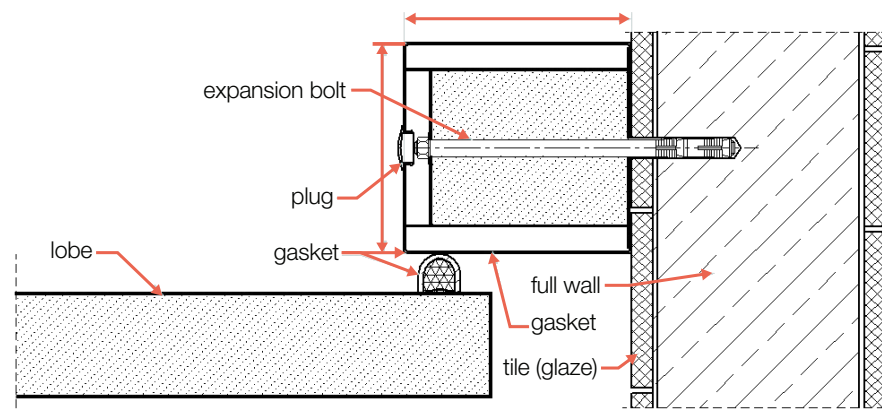
Pressure rod control can be executed as a safety lock.



Stainless steel panel or brick wall cover.



Double Door



Drawing presents classical frame for freezer door without heating and installation on brick wall.