

Pedestrian Door

STRONGDOR™ SS SERIES

Key Features

- Seamless Heavy-Duty Stainless Steel Panel
- Seamless Fully-Welded Stainless Steel Edges
- Steel Backing Plate Reinforced Hardware Locations
- High-Density EPS Bounded Core Material
- Fully-Welded and Polished Stainless Steel Frame

Major Benefits

- **Superior Strength:**
Heavy-duty construction and fully-welded edges ensure ideal performance in aggressive industrial environments.
- **Low Maintenance:**
Tough steel parts and corrosion-resistant exterior is virtually unaffected by demanding interior or exterior applications.
- **Premium Quality:**
Smoothly polished finishes and custom accessories promote a sleek but durable appearance at all times.

General Specifications

| | |
|---------------------------|--|
| Sizes | Up to 8' (2438mm) x 9' (2743mm). Additional sizes available in consultation with factory. |
| Panel Construction | <p>1 ¼" (44.5mm) thick 16-gauge, 304 #4 four-sided seamless stainless steel panel with high-density EPS bounded core.</p> <p>All hardware locations reinforced with internal steel backing plates.</p> |
| Frame Construction | <p>16-gauge, 304 #4 fully-welded and polished (through frame faces and throat) stainless steel.</p> <p>Available in either single or double rabbet construction. Prepped for a wide variety of hardware options.</p> |

Vision Panel and Louver Options

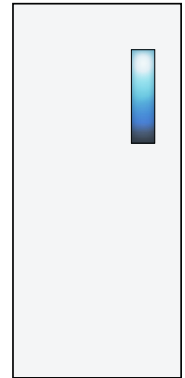
Factory installed vision panels and louvers ensure proper glazing materials are used to conform with fire and safety building codes.



Vision Panel
10" x 10"
254 x 254 mm



Vision Panel
24" x 30"
610 x 762 mm



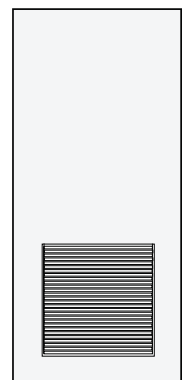
Vision Panel
5" x 20"
127 x 508 mm



Vision Panel
3" x 33"
76.2 x 838 mm



Louvre Panel
12" x 12"
305 x 305 mm

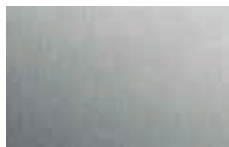


Louvre Panel
24" x 24"
610 x 610 mm

Finishes



Swirled



Satin



Bead-Blasted



Sanded



Mirror



Non-Directional